

Auckland Council

Young RMLA

31 March 16

BE THE HOW.
WHAKAMAUA KIA TINA!



OVERVIEW

- About Auckland Council
- How we Make Decisions
- How to Interact with Us
- Working for In-House Legal Team



BE THE HOW.
WHAKAMAUA KIA TINA!



ABOUT AUCKLAND COUNCIL

The Basics

- Unitary Authority
- Created on 1 November 2010
 - Local Government (Tamaki Makaurau Reorganisation) Act 2009
 - Local Government (Auckland Council) Act 2009
 - Local Government (Auckland Transitional Provisions) Act 2010
- Mayor and 20 Councillors; 21 Local Boards; IMSB
- 8825 FTE employees (10,479 employees)
- Annual Revenue \$3.2b
- Asset Base \$42b



BE THE HOW.
WHAKAMAUA KIA TINA!



ABOUT AUCKLAND COUNCIL

The Council Family

Auckland Council
Investments Limited

Panuku Development
Auckland

Auckland Tourism,
Events and Economic
Development Limited

Auckland Transport

Regional Facilities
Limited

Watercare Services
Limited

BE THE HOW.
WHAKAMAUA KIA TINA!



ABOUT AUCKLAND COUNCIL

What we do

- Setting the strategic direction for Auckland's future
- Developing a district plan for the region
- Environmental planning and management, including coastal management
- Economic development and tourism promotion
- Working with government agencies on social and cultural issues
- **Resource and building consents**
- Protecting public health (eg licensing food premises, liquor licensing, and animal management)
- Noise control
- Developing and maintaining regional and local parks
- Managing sports grounds and stadia, events, recreation and community centres and swimming pools
- Managing art galleries, museums, libraries and the zoo
- Attracting and retaining major and local events
- Providing water and wastewater infrastructure and services
- Stormwater
- Testing beach water quality
- Cleaning up stream pollution
- Collecting refuse and recycling
- Providing and maintaining roads (except state highways) and footpaths
- Delivering public transport services – buses, rail, ferries
- Building public transport infrastructure (eg train stations and cycleways)
- Street lighting
- Providing housing for the elderly
- Cemeteries and crematoria.

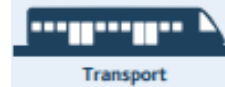
BE THE HOW.
WHAKAMAUA KIA TINA!



Area of spend	Capital spend 2015-2025 \$18.7bn	Operating spend 2015-2025 \$41.4bn
---------------	--	--



Area of spend	Capital spend 2015-2025 \$18.7bn	Operating spend 2015-2025 \$41.4bn
---------------	--	--



BE THE HOW.
WHAKAMAUA KIA TINA!



ABOUT AUCKLAND COUNCIL

How the plans work together



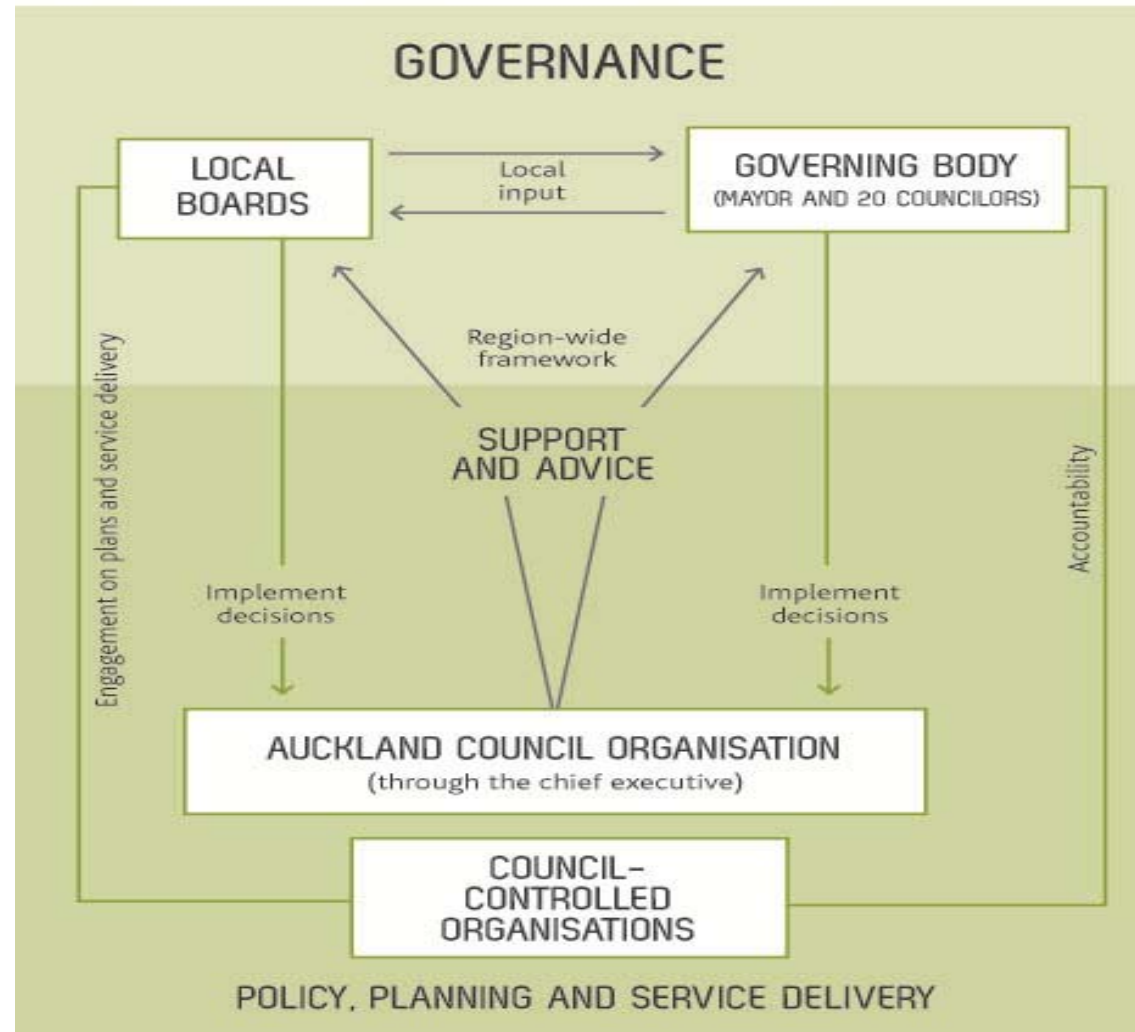
BE THE HOW.
WHAKAMAUA KIA TINA!



MAKING DECISIONS

- Political
 - Terms of Reference
 - Allocations
- Executive
 - Delegations
- Quasi-Judicial
 - Delegations
 - Appointments

THE COMPONENTS OF AUCKLAND COUNCIL



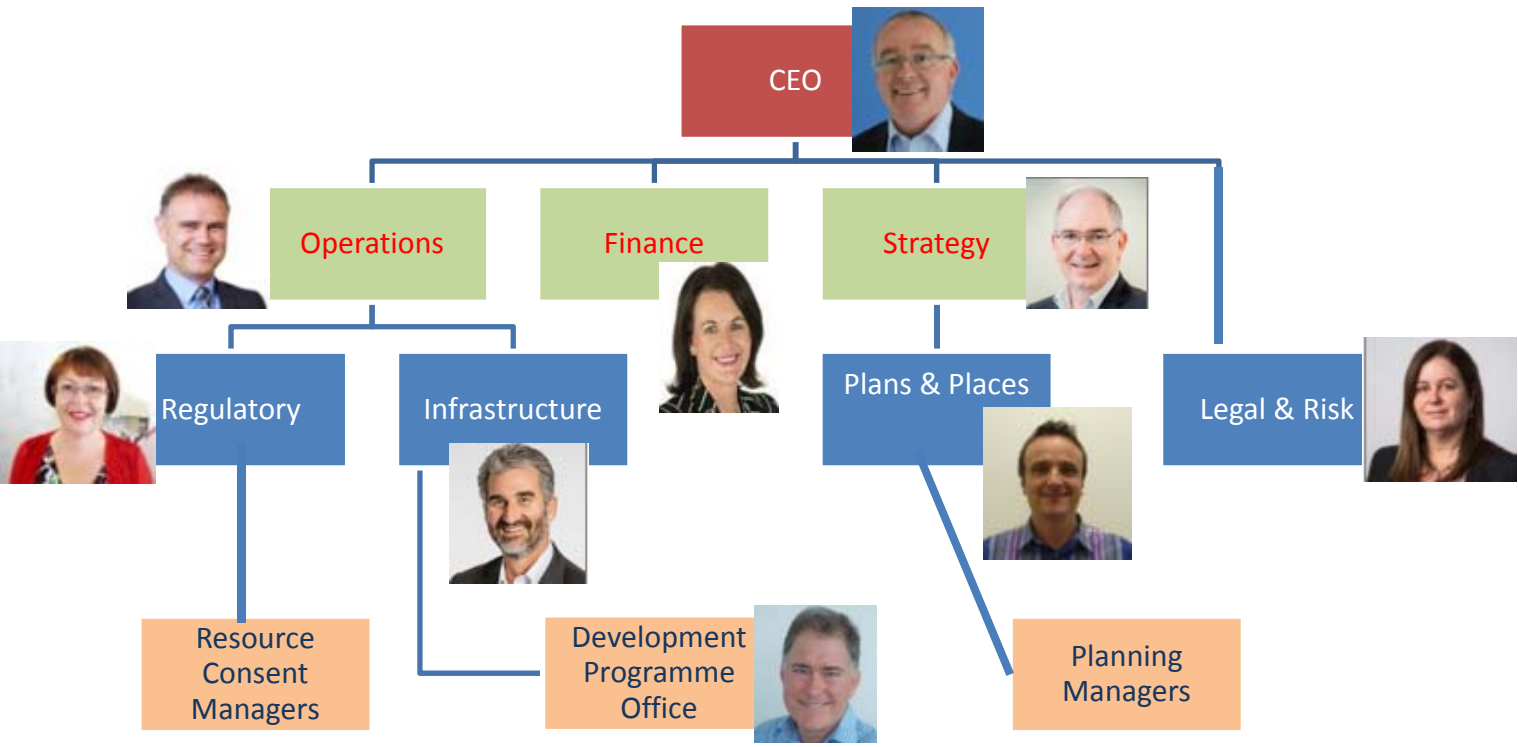
Insert name presentation here

BE THE HOW.
WHAKAMAUA KIA TINA!



HOW TO INTERACT WITH US

Selected Organisation Structure



BE THE HOW.
WHAKAMAUA KIA TINA!



HOW TO INTERACT WITH US

Shaun's Recommendations

- **Identify what your client needs**
 - plan changes/plan variations
 - consents
 - infrastructure
 - landowner approvals
 - development agreements
- **Identify who to engage with**
 - key account clients
 - talk to the subject-matter expert
 - confirm delegated authority
 - confirm the process
 - allow for timeframes
 - get it in writing
- Remember staff views are often just staff views

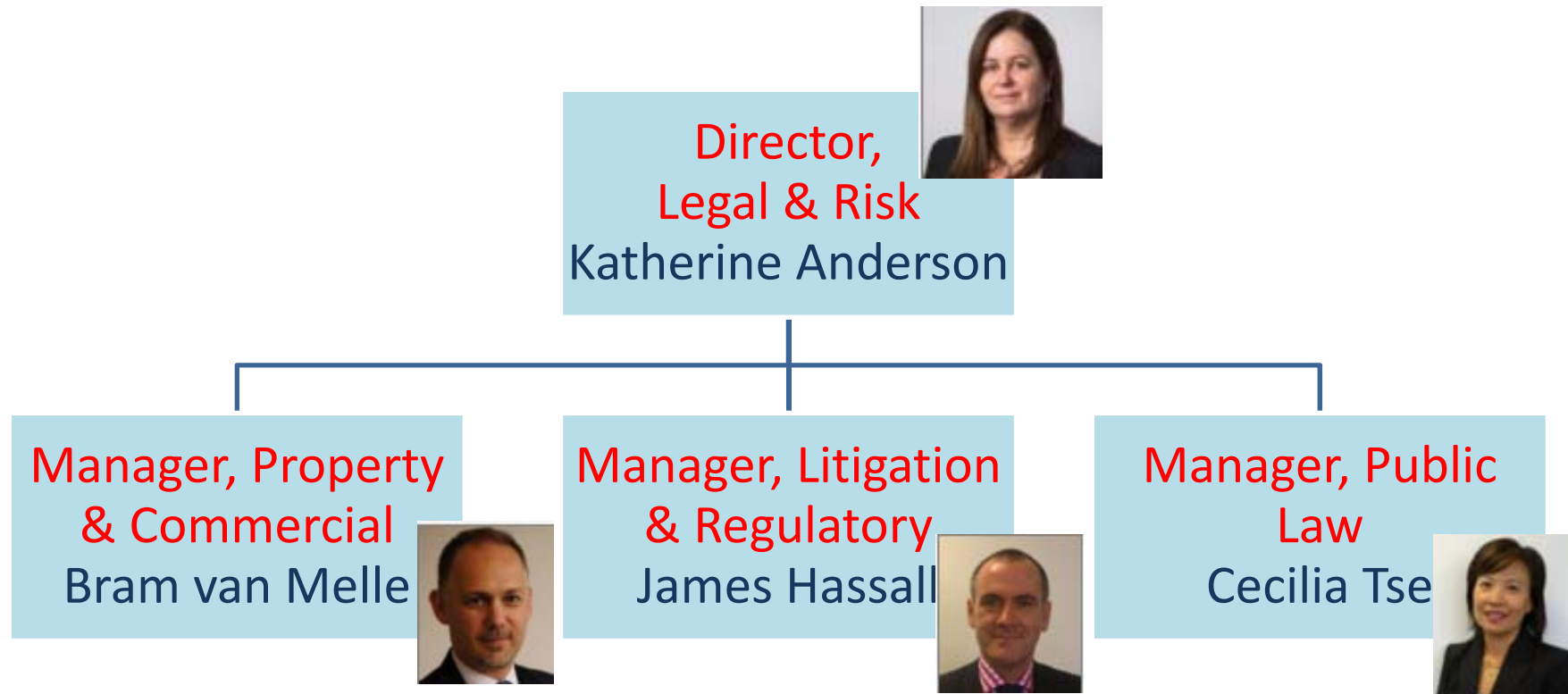


BE THE HOW.
WHAKAMAUA KIA TINA!



IN-HOUSE LEGAL

About Us



BE THE HOW.
WHAKAMAUA KIA TINA!



IN-HOUSE LEGAL

Winners In-House Team of the Year



BE THE HOW.
WHAKAMAUA KIA TINA!



QUESTIONS



BE THE HOW.
WHAKAMAUA KIA TINA!

